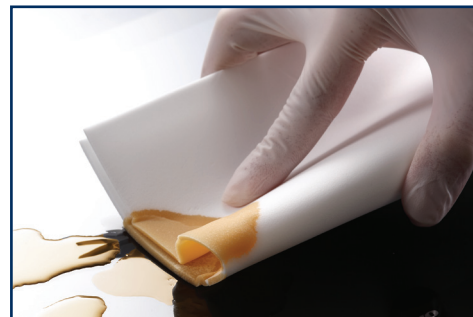


MAXONS PUF SERIES WIPERS

100% Polyurethane Foam Wipers

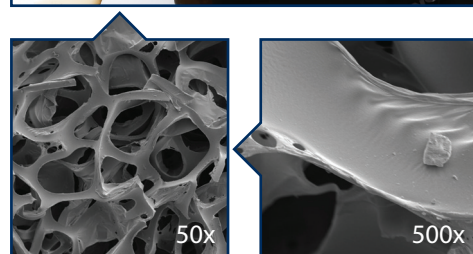
Key Features

- ▷ 100% open-cell polyurethane foam
- ▷ Laser cut edge
- ▷ Available weight: 30 g/m²
- ▷ Available sizes: 9" x 9", 12" x 12"
- ▷ Soft and non-abrasive texture
- ▷ Extremely absorbent
- ▷ Lot to lot traceable



Applications

- ▷ An excellent alternative to cellulose sponges
- ▷ Work well with alcohol and solvents
- ▷ Ideal for applying cleaning solutions to large surfaces
- ▷ Suitable for use in ISO Class 6 - 8 cleanrooms



Technical Data

↳ Performance Characteristics

Property	Value
Basic weight	30 g/m ²
Absorbency	
Extrinsic	2,346 ml/m ²
Intrinsic	78.2 ml/g
Sorptive rate	0.3 second

↳ Contamination Characteristics

Property	Value
Particle counts	
LPC ≥ 0.5 μm	1,100 counts/cm ²
Non volatile residue (NVR)	
DIW extractant	0.11 g/m ²
IPA extractant	1.2337 g/m ²
Extractable counts (Ions)	
Sodium	< 22 ppm
Potassium	< 0.45 ppm
Chloride	< 0.53 ppm