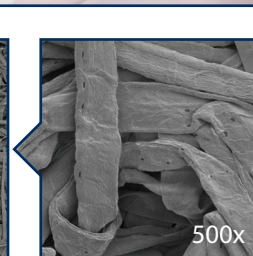
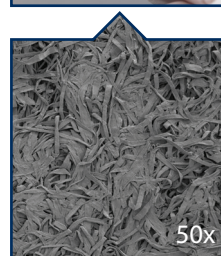


MAXONS N600 SERIES WIPERS

Non-Woven Polyester/Cellulose Wipers

Key Features

- ▷ 45% polyester/55% cellulose composite
- ▷ Available weights: 50 g/m², 56 g/m², 60 g/m², 68 g/m²
- ▷ Available sizes: 6" x 6", 9" x 9", 12" x 12", 18" x 18"
- ▷ Chemical and abrasion resistant
- ▷ Highly absorbent
- ▷ Low levels of particles and extractables
- ▷ Lot to lot traceable
- ▷ Pre-wet and sterile versions available



Applications

- ▷ Designed for removal of strong acids and chemical spills
- ▷ Excellent for cleaning and polishing delicate equipment
- ▷ Ideal for wiping scratch-sensitive surfaces in ISO Class 6 - 8 cleanrooms

Technical Data

↳ Performance Characteristics

Property	Value	Value	Value	Value
Basic weight	50 g/m ²	56 g/m ²	60 g/m ²	68 g/m ²
Absorbency				
Extrinsic	291 ml/m ²	324 ml/m ²	348 ml/m ²	380 ml/m ²
Intrinsic	5.8 ml/g	5.8 ml/g	5.8 ml/g	5.6 ml/g
Sorbptive rate	0.8 second	0.8 second	0.8 second	0.8 second

↳ Contamination Characteristics

Property	Value	Value	Value	Value
Particle counts				
LPC ≥ 0.5 μm	6,200 counts/cm ²	6,200 counts/cm ²	6,200 counts/cm ²	6,200 counts/cm ²
APC ≥ 0.3 μm	12,500 counts/m ³	12,500 counts/m ³	12,500 counts/m ³	12,500 counts/m ³
Non volatile residue (NVR)				
DIW extractant	0.0317 g/m ²	0.0364 g/m ²	0.0412 g/m ²	0.0486 g/m ²
IPA extractant	0.0072 g/m ²	0.0089 g/m ²	0.0103 g/m ²	0.0115 g/m ²
Extractable counts (Ions)				
Sodium	< 98 ppm	< 98 ppm	< 98 ppm	< 98 ppm
Potassium	< 18 ppm	< 18 ppm	< 18 ppm	< 18 ppm
Chloride	< 68 ppm	< 68 ppm	< 68 ppm	< 68 ppm